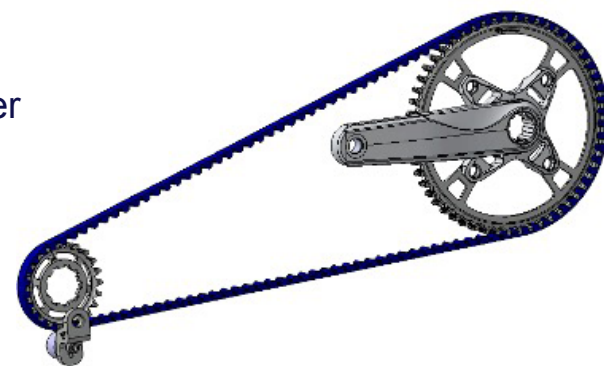


OUR STRENGTHS

▶ Since 1890, **HUTCHINSON®** is a well-known French brand and manufacturer in the cycling world

▶ **A complete offer :**
Belt / front sprocket / rear sprocket / snubber



- ▶ **System adapted for all main e-bike motor models**
- ▶ Compatible with mid-drive and rear hub motor designs
- ▶ **Strong know-how** of the manufacturing process and materials used (worldwide expertise in the automotive market)
- ▶ **Partnerships with well known e-bike part manufacturers**
European suppliers preferred
- ▶ Worldwide support: localized technical-sale offices.



HUTCHINSON BELT DRIVE SYSTEMS

Tel.: +33 (0)2 47 48 39 99 / beltdrives@hutchinson.com
www.hutchinsontransmission.com



CROSSDYN®

DISCOVER THE HUTCHINSON® BELT DRIVE BUILT FOR THE CYCLING WORLD.

Hutchinson's **CROSSDYN®** belt is built on an innovative **patented concept**. This unique architecture enables efficient power transmission through synchronous teeth, while the central V-profile ensures optimal belt retention on the pulleys.



**Micro-mobility
& Cycling**

BELT FOR E-BIKES

Compared to traditional chain transmissions, this solution offers numerous advantages:
zero maintenance, enhanced pedaling comfort, and longer lifespan.

Our current range includes belts, sprockets, and snubbers.

Hutchinson® is committed to the continuous development of this range, while providing tailored technical support based on customer specifications, including pre-studies and the provision of samples.



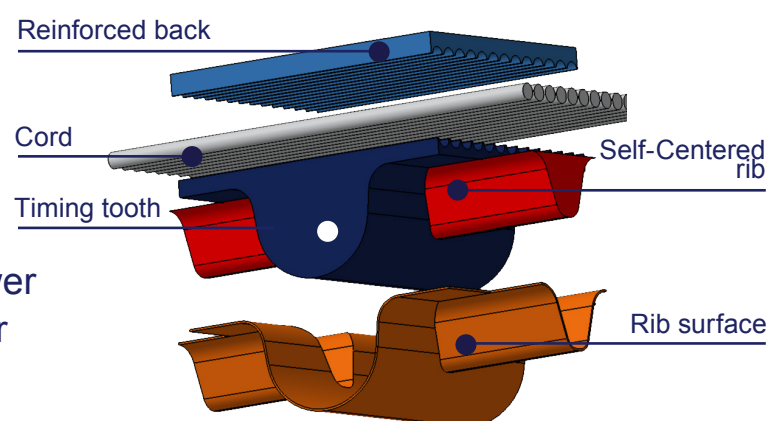


STRUCTURE & PERFORMANCES

Optimized Mixed profile guaranteeing the lateral guidance of the belt, allows debris and water to be expelled and high torque transmission.

- Timing teeth suited for high torque values (ribs pitch 11mm)
- Self-centered belt thanks to its longitudinal rib

- **Belt teeth moulded** with high performance rubber specially developed for bike application
- **Rib surface belt** in high performance polyamid fabric
- **High module cord** to transmit power
- **Reinforced back** with specific fiber rubber compound



- ▶ Belt drive in accordance with ISO 4210 (torque max. 250N.m) and NF EN 15194 standards

HUTCHINSON®: AN INNOVATIVE OFFER

- ▶ **A unique belt design**
Patented
- ▶ **Easy to handle**
Not fragile, compact storage
- ▶ **Delivery leadtime**
Automotive market reliability
- ▶ **Range**
Large possibilities of gear ratios and belt lengths
- ▶ **Large variety of materials used for the sprockets**
Depending on the customer specification (aluminium, steel)

- ▶ **Belt marking**
Personalised on demand
- ▶ **Sustainability**
 - Material to be re-used in our manufacturing process
 - Small & compact packaging reducing our carbon footprint

ADVANTAGES OF THE E-BIKE BELT DRIVE VS CHAIN



MAINTENANCE FREE



COMFORT RIDING



MATERIALS AUTO-EJECTED



EXTENDED LIFETIME



Rust



Oil



Vibrations



Sand



Gravel



Detension



Cleanliness



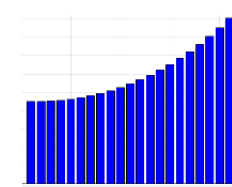
Noise



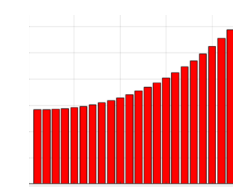
Freeze / Rain

HUTCHINSON PARTNERSHIP: A GUARANTEE

- ▶ **System & collaborative design**
Our specific simulation tools allow us to match customer specifications



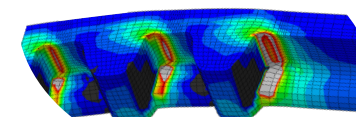
Force on tooth rear sprocket



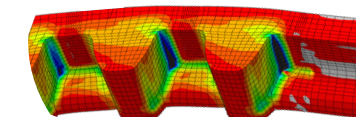
Force on tooth front sprocket

- ▶ **Measurements & validation**
Special bike test rigs (torque capacity, durability, contamination, misalignment...)

- ▶ **Belt design**
CAD & finite element analysis calculation tools



Shear stress on belt rib



Belt rib strain